

ST PAUL'S SUITE.

(For String Orchestra.)

Cello.



Vivace. *f* *Jig* *1*

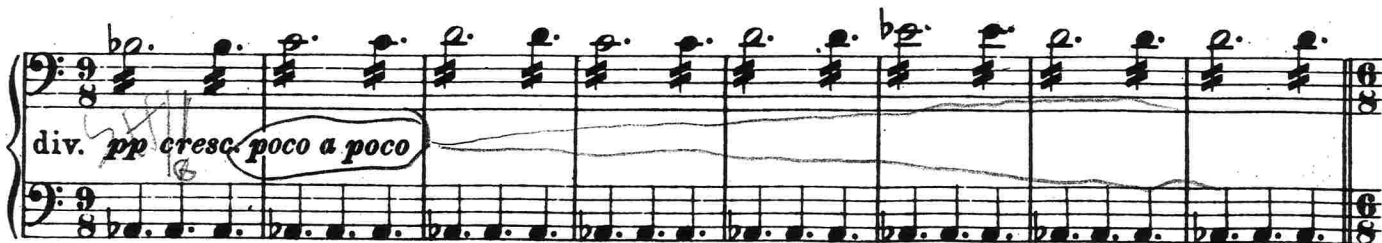
p *cresc* *dim.* *p*

Copyright, 1922 in U. S. A.
Copyright, 1922 by Goodwin & Tabb Ltd.
Copyright, U.S.A. renewed 1950

London: J. Curwen & Sons Ltd., 24 Berners St., W.1.
New York: G. Schirmer Inc., Sole Agents for U.S.A.

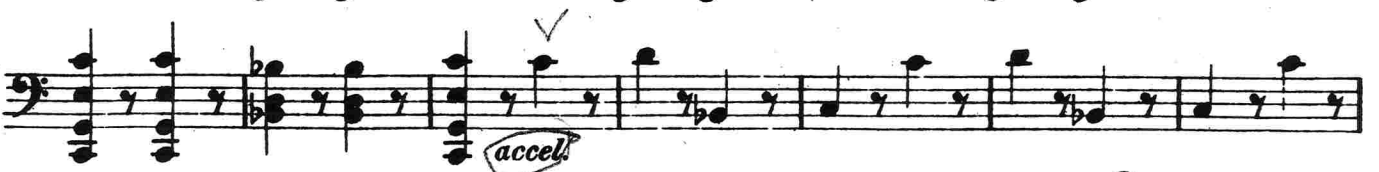
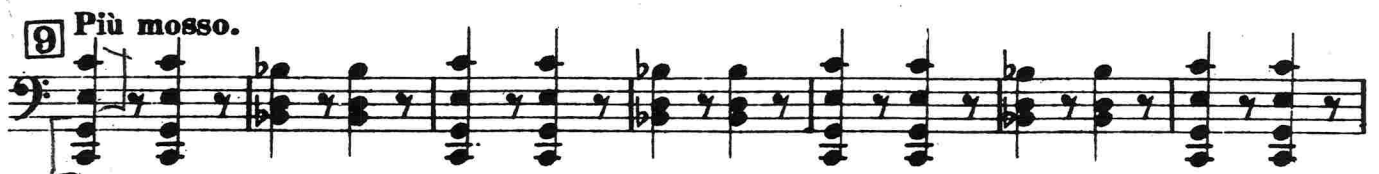
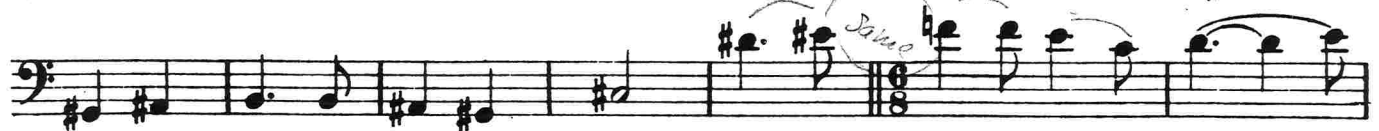
Cello.

3



Cello.

3



Cello.

Ostinato

2

Presto. con sord.
pizz.

5

Intermezzo

3

[illegible]

The image shows a musical score for the song "The Rose Tree". It consists of three staves of music. The first staff is the vocal melody, written in a treble clef with a key signature of one sharp (F#). The second staff is the piano accompaniment, written in a bass clef. The third staff is a continuation of the piano accompaniment. The music is in 4/4 time. The first staff has a tempo marking of "Allegretto". The second staff has a first ending bracket labeled "1". The third staff ends with a double bar line and a key signature change to two sharps (F# and C#).

Cello.

[2] Vivace
arco

mf

[8]

ff

Tempo I.

pp

pizz.

pp

[4]

f

p

[5] Vivace.
arco

rit.

[6]

ff

Tempo I.

ff

Adagio

Solo I.

pp

Tutti
pizz.

pp

Cello.
Finale
(The Dargason)
4

7

Allegro. 16 1 pizz. *pp*

cresc.

cresc.

2 arco *f*

dim.

L'istesso tempo (One beat in a bar)
(Green Sleeves)

3 *mp cantabile*

sf

pp

Cello.

4 Two beats in a bar

cresc *f* *pesante* *cresc.*

ff

sempre ff

div. p cresc. poco a poco

p cresc. poco a poco

ff

ff

Cello.

9

unis.

8

9 One beat in a bar

sempre ff

dim.

10 Two beats in a bar

p

pp

10 1/2

10